

Texas Epidemic Public Health Institute

**Robert J. “Safety Bob” Emery, DrPH, MSPH, MSEH,
CHP, CIH, CSP, CBSP, CHMM, CPP, ARM**

TEPHI Program Director, Business Operations Resiliency Program

&

Janelle Rios, PhD, MPH

TEPHI Deputy Director

NOVEMBER 16, 2023

Objectives

- ✓ Explain why TEPHI was created
- ✓ Recognize TEPHI's major focus areas
- ✓ Describe opportunities to connect & collaborate

Global Health Threats

- New microbes
- Globalization
- Drug resistance
- Accidental or intentional releases
- Pathogens in the wrong hands

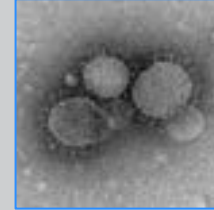


Impact of Infectious Diseases

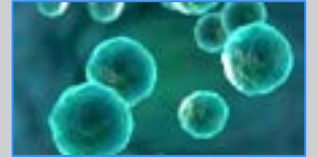
- Constant
- Costly
- Affects all facets of life
- Exposes gaps in knowledge and equity



E. coli



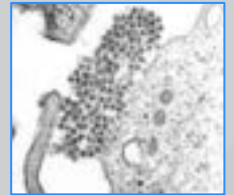
MERS



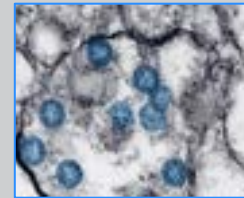
Cyclospora



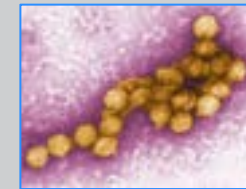
RSV



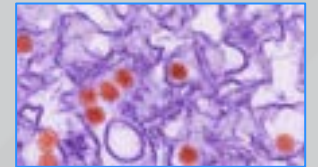
Dengue



SARS-CoV-2



West Nile



Zika



Ebola



Influenza

About TEPHI

Mission:

To keep Texans safe & the economy strong by strengthening the capacity & resiliency of Texas communities to respond to future infectious disease outbreaks



Texas Public Health Summit
Houston, TX | October 2023



SETRAC 2022 Preparedness Coalition Symposium
Galveston, TX | November 2022

Established to:

- Support a strong public health workforce
- Prepare Texans for public health threats related infectious diseases
- Promote a strong economy resilient to infectious diseases

UTHealth Science Center at Houston

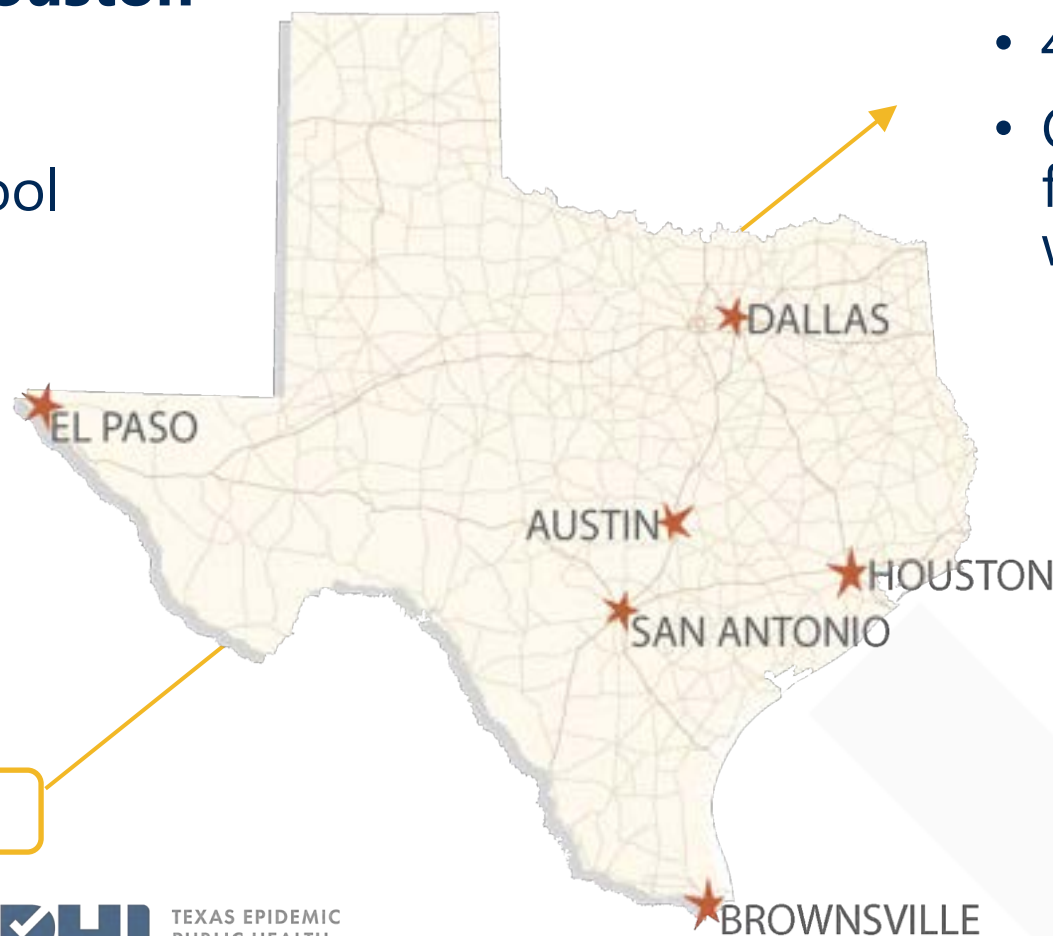
(UTHealth Houston)

Located w/in UTHealth Houston

- Cizik School of Nursing
- McGovern Medical School
- MD Anderson UTHealth Graduate School of Biomedical Sciences
- School of Dentistry
- McWilliams School of Biomedical Informatics
- School of Public Health

Led by UTSPH

- 4th largest in the nation
- Campus system facilitates collaboration with local stakeholders



Benefits of Academic Affiliation

- Access to scientific & medical expertise throughout the academic & research enterprise
- Access to robust public health network & capabilities of UTHealth Houston School of Public Health
- Leverage institutional resources



TEPHI's History

2020

COVID-19

Declared statewide public health disaster on Mar. 13th



2021

Foundational Work

The early days of TEPHI began late fall 2021, laying the groundwork within UTHealth Houston that continued into 2022

87th Legislature

Established TEPHI as a statewide agency, housed at UTHealth, thru passage of SB 1780



2022

TEPHI Team

Onboarding of faculty & staff begins, along with launching key programs

TX PH Summit

July | Hosted inaugural annual conference on public health preparedness – focused on health communications



Seminars & Workshops

TEPHI Talks and Grand Rounds seminars begin, along with many workshops for community leaders statewide



2023

Certificate Program

August | Launched online certificate program in pandemic preparedness, free to all Texas residents

Program & Partner Expansion

2023 begins with expanded programs, training, and more, along with plans for growing partnerships and resource offerings across Texas.



Collaborations are Critical

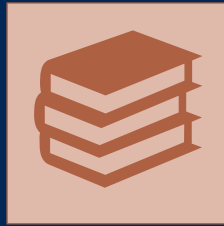
- Governmental agencies at all levels
- Regional & state-wide organizations
- Academic institutions
- Professional associations
- Business entities
- Community organizations
- Faith-based organizations



TEPHI's Focus Areas



Readiness



Training



Communications

Readiness Initiatives



Early Detection

Monitor wastewater to detect the spread of pathogens and develop reporting protocols



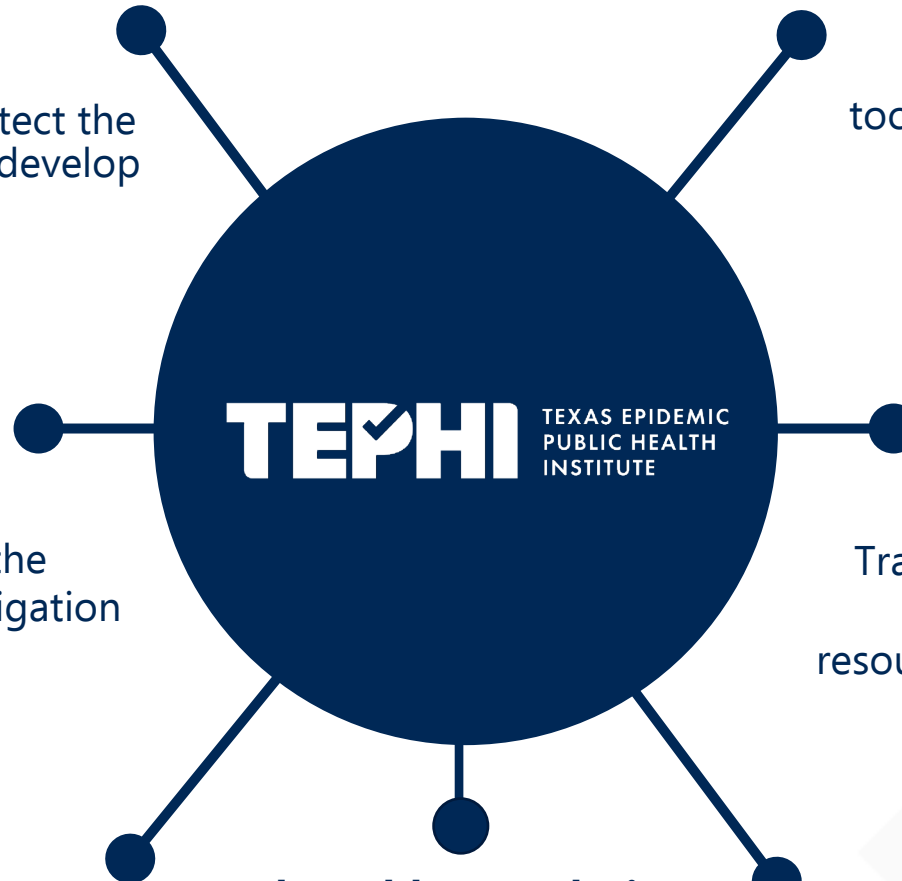
Epidemiology Preparedness Partnership Initiative

Strengthen capability for the early detection and investigation of outbreaks



Lab Network

Create a network and catalog of laboratory capabilities (not yet launched)



Vulnerable Populations

Strengthening community resiliency through training and networking

Business Operations Resiliency

Provide business sector with tools and training to maintain a healthy workforce and economic stability



Rural Healthcare Systems

Train rural hospitals in infection prevention and disseminate resource guides for rural counties



Food Chain Preparedness

Collaborate with stakeholders to improve supply chain resilience



Readiness Highlight:

Food Chain Preparedness



Develop relationships with food industry partners and employees



Provide culturally-relevant training to improve employee health & safety



Distributing regionally-tailored resource guides for rural counties



Training & vaccine clinic
for dairy workers
Friona and Muleshoe, TX
March 2021

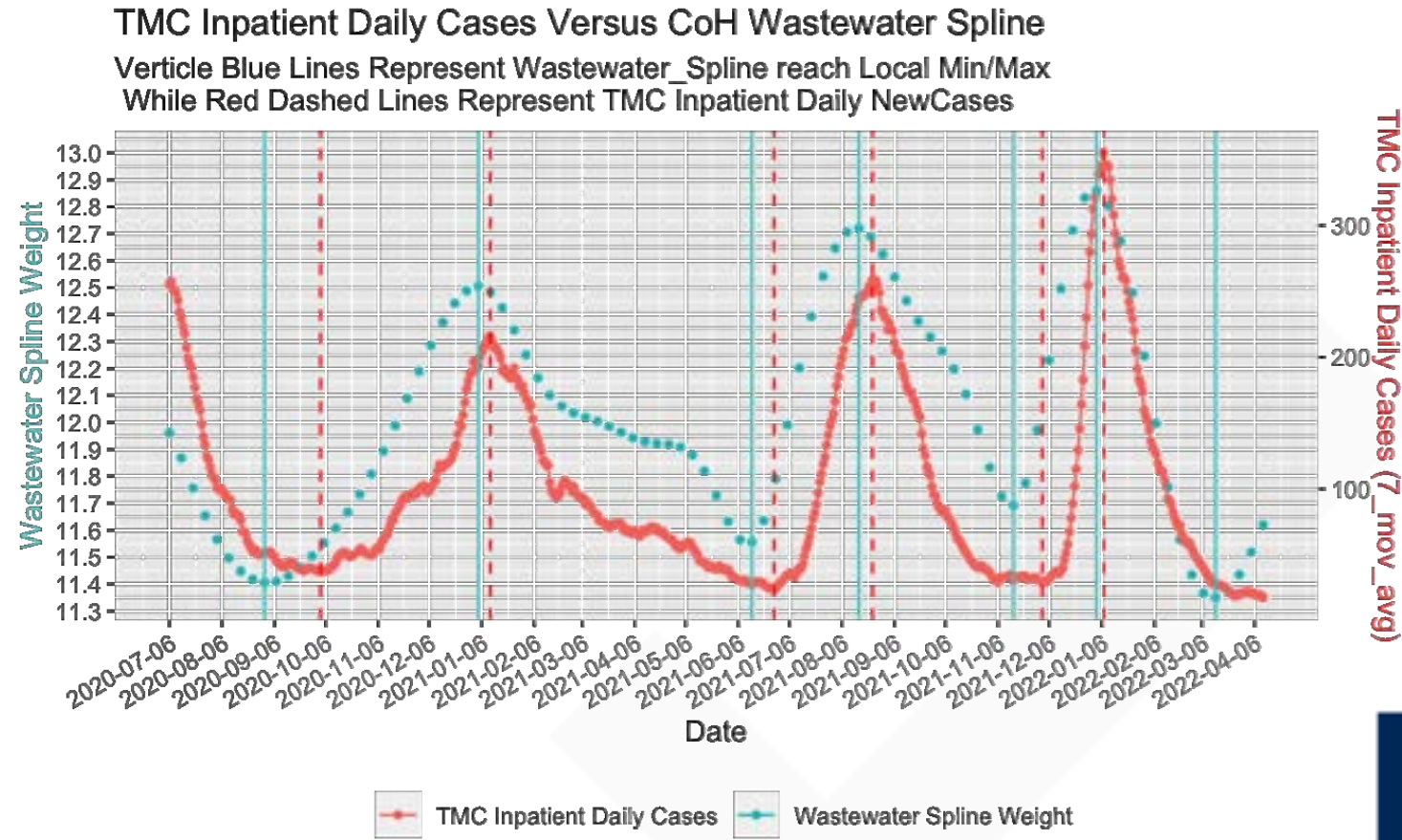


Readiness Highlight:

Early Detection

TX Wastewater Consortium

- 20 sites from 9 TX cities
- 100s of viruses using 2 analytical methods
- Data visualization
- Partnership with UTSPH & Baylor College of Medicine

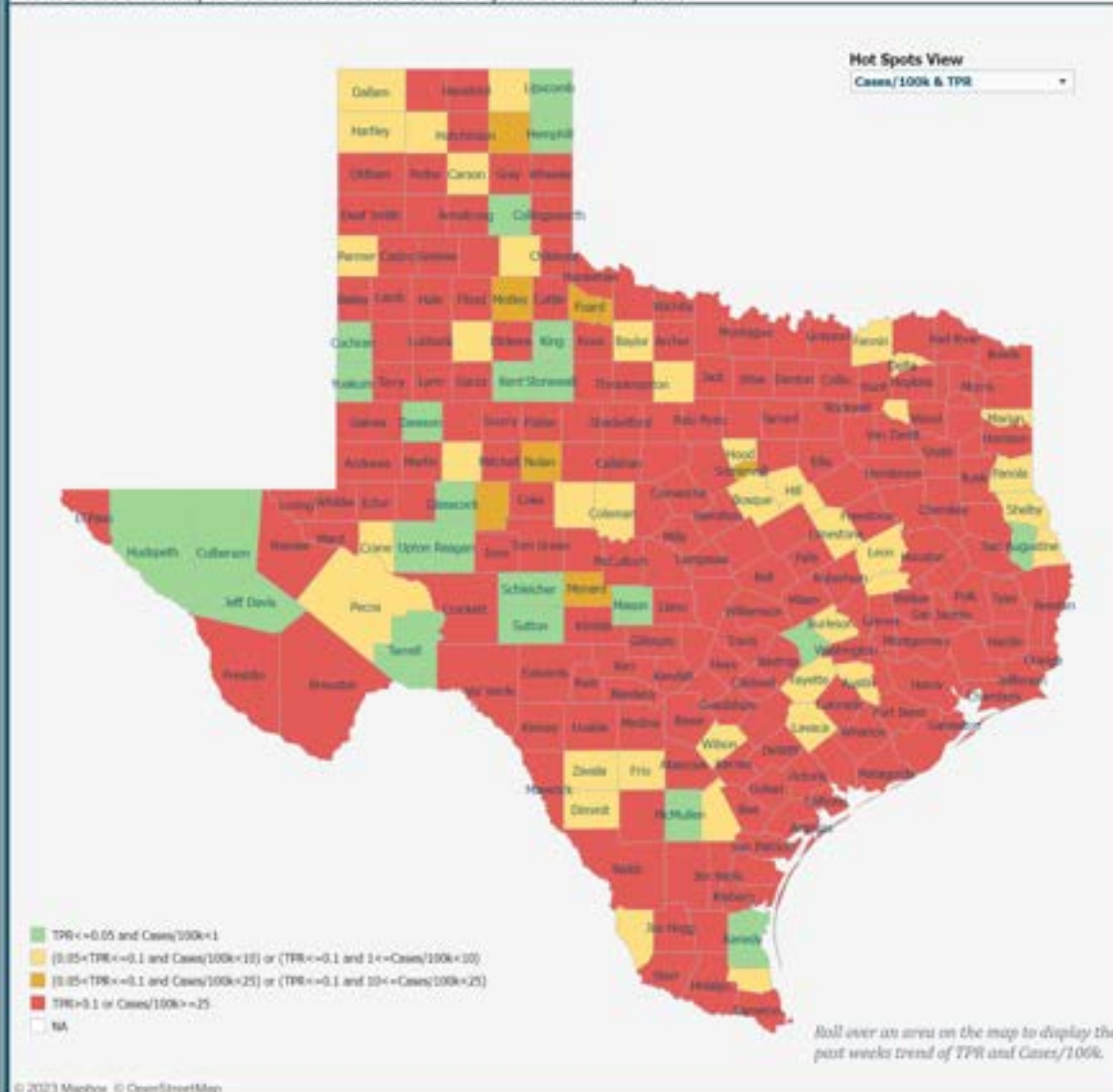




Test positivity rate (TPR) compared to the number of Cases per 100,000 population in each county

1/16/2023

Test Positive Rate is an indicator of "Are we testing enough?". While Cases per 100k is an indicator of spread of the disease in the communities. A TPR of >10% and >25 per 100k indicates that not only is there substantial community spread but we are not testing sufficiently in the community to identify all those who may be potentially infected. Wide spread testing is key to containing continued community spread. We recommend these metrics be use collectively as an indicator for COVID-19 risk of spread at the county level.



	Test positivity rate	Cases/100k
Anderson	11.2%	1
Andrews	11.2%	8
Angelina	11.2%	3
Aransas	14.7%	5
Archer	28.8%	21
Armstrong	36.8%	22
Atascosa	18.0%	7
Austin	6.1%	8
Bailey	28.0%	11
Bandera	19.0%	5
Bastrop	21.2%	13
Baylor	0.0%	4
Bee	26.9%	7
Bell	13.4%	11
Bexar	17.8%	8
Blanco	18.8%	6
Borden		21
Bosque	6.2%	8
Bowie	12.1%	4
Brazoria	16.3%	18
Brazos	12.2%	8
Brewster		2
Briscoe	0.0%	36
Brooks	24.5%	8
Brown	17.1%	3
Burleson	7.1%	6
Burnet	23.8%	10
Caldwell	24.3%	17
Calhoun	26.1%	18
Callahan	16.7%	1
Cameron	21.8%	9
Camp	17.8%	4
Carson	18.8%	8
Cass	14.7%	3
Castro	26.2%	17
Chambers	16.9%	14
Cherokee	11.2%	4
Childress	20.4%	20
Clay	26.2%	22
Cochran	0.0%	0
Coke	14.3%	9
Coleman	6.7%	3
Collin	21.8%	4
Collingsworth	11.2%	13
Colorado	11.8%	7
Comal	17.8%	6
Comanche	18.5%	2
Concho		21

Readiness Highlight:

UTHealth Hotwash

- In-person meeting
May 2, 2023
- Discussed pandemic response
- Invited major university lines
- Supplemented with online survey



Readiness Highlight:

Hotwash Findings

Successes

- Nimble, adaptable can-do attitude
- New collaborations forged
- New IT tech integrated successfully

Challenges

- Confusion ~ rapidly changing recs
- Staffing shortages
- Supply chain interruptions
- Stress & employee burnout

Future Recommendations

- Better communications
- More preparation & training
- Standardization of protocols
- More resources



UTHealth Houston Hotwash
Houston, TX | May 2023

Training



Certificate Program

Training people interested in pandemic preparedness via self-paced courses & capstone exercise



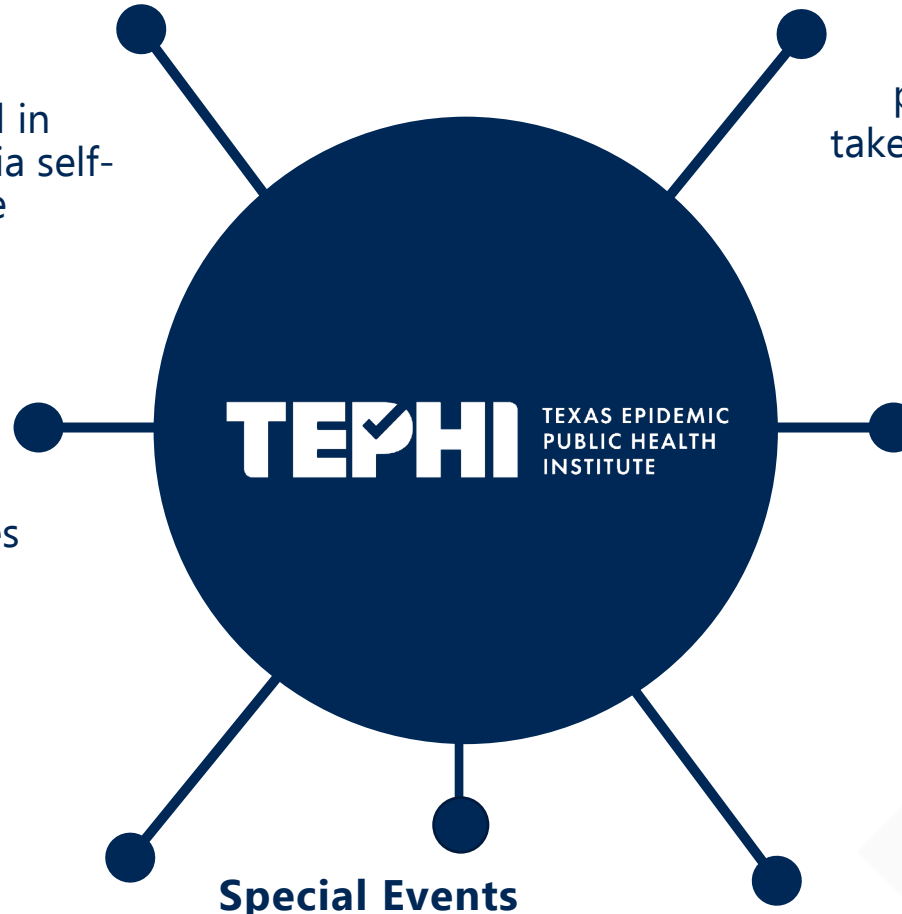
Mini Courses

Short special topics courses lasting less than 3 hours



Public Health Reserve Network

Network of trained individuals serving as community resource



Special Events

- Workshops
- Special Presentations
- Annual TX Public Health Summit

Grand Rounds Seminars

Designed for scientists, researchers, & healthcare providers, this webinar series takes a deep dive into infectious disease topics



TEPHI Talks Seminars

Business officials come together to share best practices in infectious disease mitigation



Infection Prevention & Control Series

Designed to equip small healthcare facilities in the 5 major areas of infection prevention & control



Training

Certificate Program

- Online & No-cost
- 4 asynchronous courses
 - Fundamentals of Epidemiology
 - Foundations of Infectious Diseases
 - Surveillance of Infectious Diseases
 - PH Emergency Preparedness & Response
- 1 synchronous capstone course
 - simulated PH emergency
- CE units: CME, CHES, CPH, RS, SW, NCPD

Community Health Worker Program

- Monthly training: in-person & online
- Greatest activity: Houston, El Paso, Edinburg/Brownsville, San Antonio
- Pipeline program w/ Spring ISD



Community Engagement Bootcamp
Houston, TX | December 2022

Training Highlight:

Certificate & CHWs

Certificate Program

- Online & No-cost
- 4 asynchronous courses
 - Fundamentals of Epidemiology
 - Foundations of Infectious Diseases
 - Surveillance of Infectious Diseases
 - PH Emergency Preparedness & Response
- 1 synchronous capstone course
 - simulated PH emergency
- CE units: CME, CHES, CPH, RS, SW, NCPD

Community Health Worker Program

- Monthly training: in-person & online
- Greatest activity: Houston, El Paso, Edinburg/Brownsville, San Antonio
- Pipeline program w/ Spring ISD



Community Engagement Bootcamp
Houston, TX | December 2022

Training Highlight:

Monthly Webcasts



H-E-B | Office Depot | McKesson | Dell Technologies
Johns Hopkins Bloomberg SPH
Texas International Produce Association
Texas Restaurant Association



View past recordings @
go.uth.edu/TEPHIYouTube



Monkeypox | Adenovirus | Norovirus
Wastewater Monitoring | Public Health Law
Vector Borne Diseases | Avian Influenza
GIS for Public Health (9/13/23)

Communications



Public Engagement

Engaging communities in advisory committees, programs, & other activities



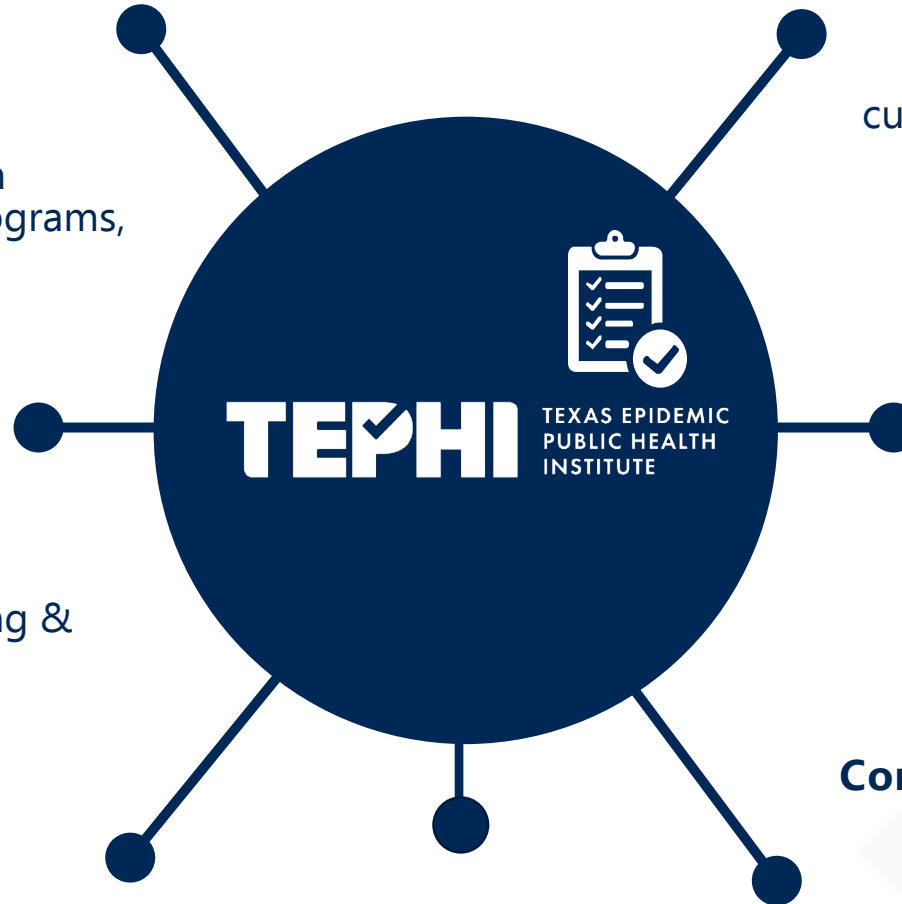
Community Outreach

Building relationships & awareness through training & empowerment



Training Curriculum

Creating & disseminating communications tools & curricula



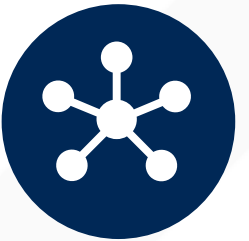
Strategic Communications

Developing & delivering culturally relevant, scientifically sound information



Risk Communications

Exchanging information, data, & advice to mitigate infectious disease threats



Communications Platforms

- Newsletters
- Media
- Website

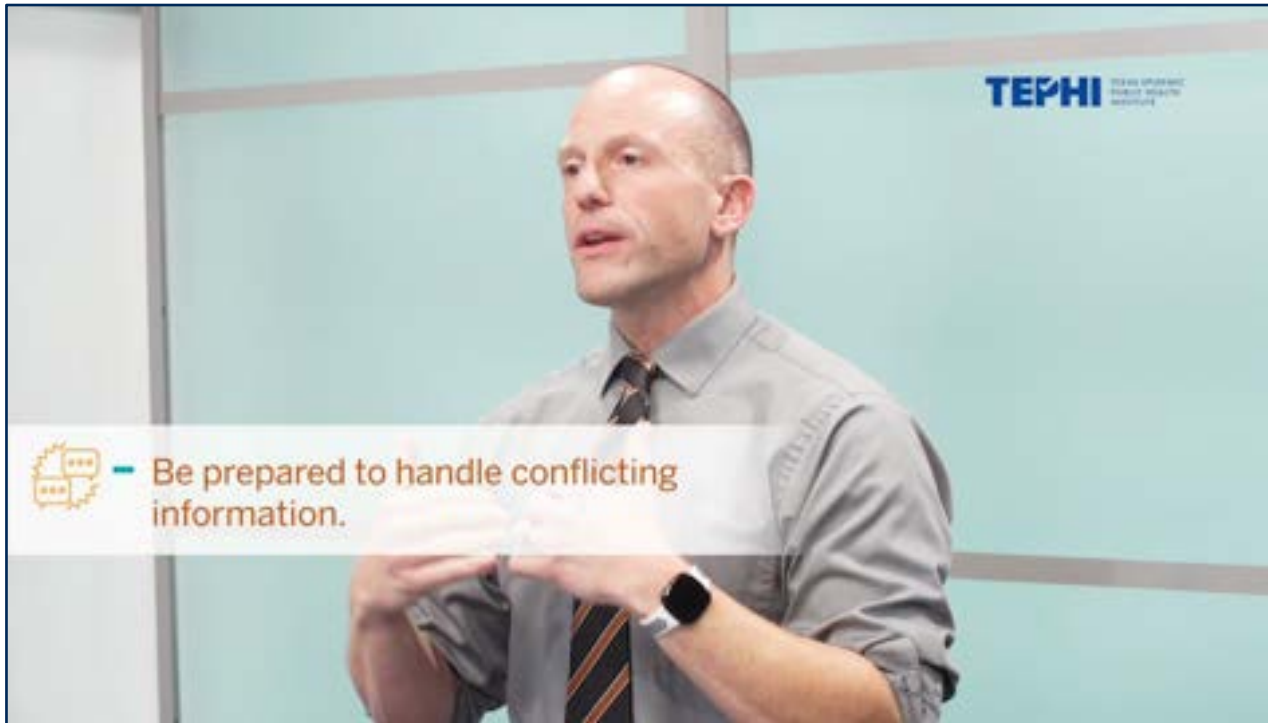


Communications Highlight:

Online Health Coms Course



bit.ly/HCTS_TEPHI



PANDEMIC PREPAREDNESS COMMUNICATION

Free, 60-minute course about plans to put in place before a pandemic, & best practices for communication during and after pandemic

Created in partnership w/
The **Center for Health Communications**
@ the University of Texas at Austin

Opportunities to Connect



News & Updates

go.uth.edu/TEPHIsubscribe



Webinars & Trainings

go.uth.edu/TEPHItraining



Online Courses

go.uth.edu/TEPHIcourses



Resources

go.uth.edu/TEPHIresources



TX Public Health Summit

go.uth.edu/TXPHS



TEPHI.Texas.Gov

Special Opportunity for State Agencies

Workshop Program

- Demystify public health concepts, terms, and tools
- Operationalize public health guidance
- Customized to your agency

UTH SPH Academic Programs

MPH

- Dietetic Internship
- Community Health Practice
- Environmental Health
- Epidemiology
- Health Promotion & Health Education
- Health Service Organizations
- Healthcare Management

MS

- Biostatistics

DrPH

- Community Health Practice
- Health Promotion & Health Education

PhD

- Behavioral Sciences & Health Promotion
- Biostatistics
- Environmental Science: Environmental Disease Prevention
- Environmental Science: Total Worker Health
- Epidemiology
- Health Economics & Health Services Research
- Healthcare Management & Health Policy

Learn more @
sph.uth.edu/application

Other

- Customized MPH
- Dual Degree Programs
 - With MPH: DDS, DMD, JD, MBA, MD, MGPS, MPAFF, MS, MSSW, MSW, Pharm, & PhD
- Accelerated Masters
- Certificates
 - Degree-Seeking Certificate
 - Non-degree Certificates

Thank You!



Robert.J.Emery@uth.tmc.edu



Janelle.Rios@uth.tmc.edu

 tephi.texas.gov

 info@tephi.texas.gov

 866.89.TEPHI

 [tephi.texas](https://www.instagram.com/tephi.texas)



 [tephi_Texas](https://twitter.com/tephi_Texas)



 [TEPHI.Texas](https://www.facebook.com/TEPHI.Texas)

